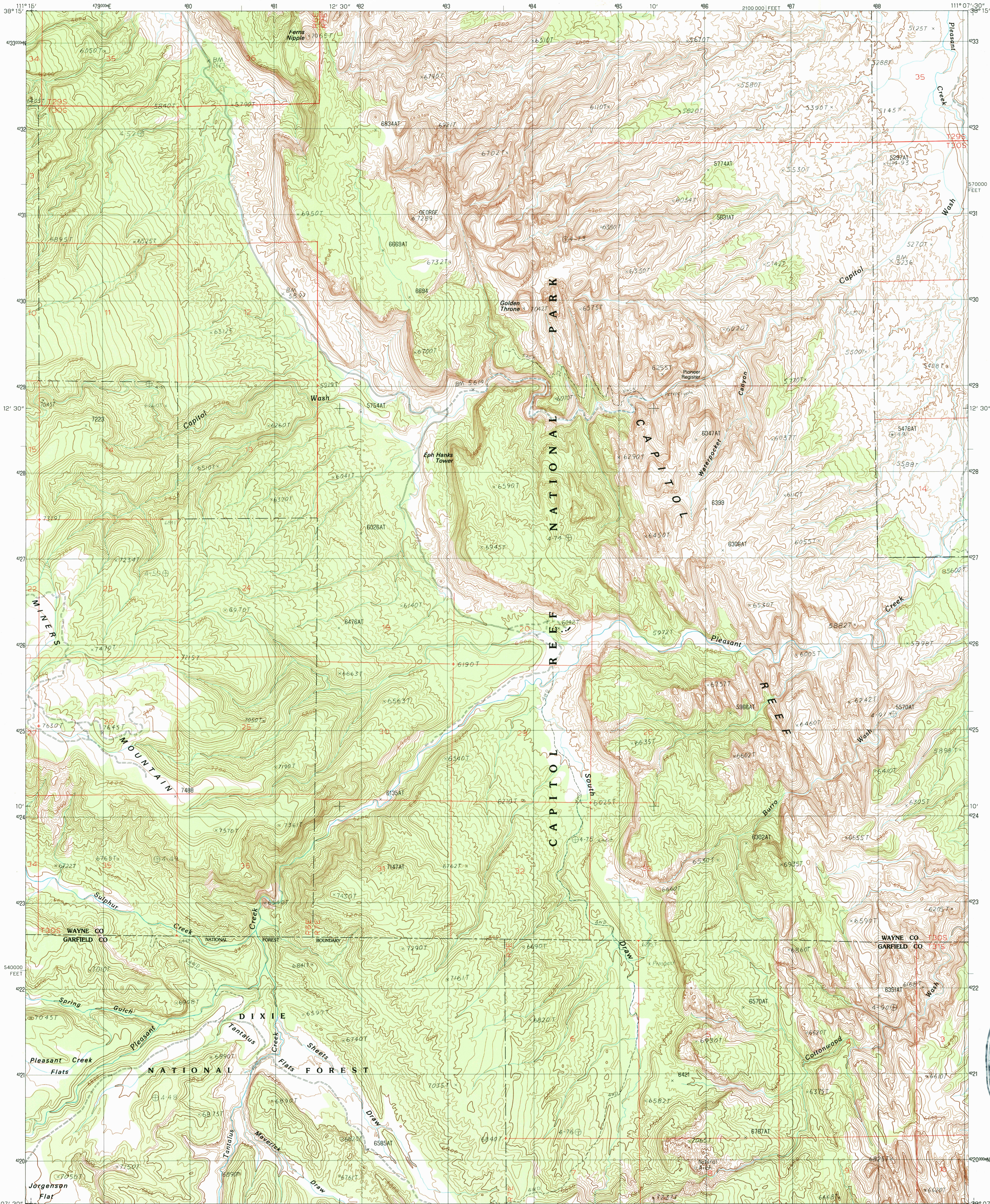


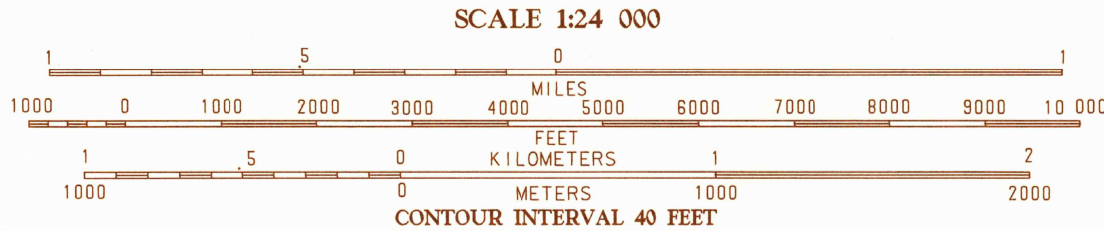
UNITED STATES  
DEPARTMENT OF THE INTERIOR  
GEOLOGICAL SURVEY

GOLDEN THRONE QUADRANGLE  
UTAH  
7.5 MINUTE SERIES (TOPOGRAPHIC)



PRODUCED BY THE UNITED STATES GEOLOGICAL SURVEY  
CONTROL BY U.S.G.S. NOS/NOAA  
COMPILED FROM AERIAL PHOTOGRAPHS TAKEN IN 1981  
FIELD CHECKED IN 1983 MAP EDITED IN 1987  
PROJECTION LAMBERT CONFORMAL CONIC  
GRID HORIZONTAL TRANSVERSE MERCATOR ZONE 12  
8000-FOOT STATE GRID TICS UTAH SOUTH ZONE  
UTM GRID DECLINATION 0° 07' WEST  
1983 MAGNETIC NORTH DECLINATION 1° 30' EAST  
VERTICAL DATUM NATIONAL GEODIC VERTICAL DATUM OF 1959  
HORIZONTAL DATUM 1927 NORTH AMERICAN DATUM  
To place on the predicted North American Datum of 1983,  
move the projection lines as shown by dashed corner ticks  
(6 meters north and 64 meters east)  
There may be private inholdings within the boundaries of any  
Federal and State Reservations shown on this map  
Where omitted, land lines have not been established  
No distinction made between houses, barns, and other buildings  
All marginal data and lettering generated and positioned by  
automated type placement procedures

PROVISIONAL MAP  
Produced from original  
manuscript drawings. Infor-  
mation shown as of date of  
photography.



1	2	3	4	5	6	7	8
1	2	3	4	5	6	7	8
1	2	3	4	5	6	7	8

UTAH  
QUADRANGLE LOCATION

ADJOINING 7.5 QUADRANGLE NAMES

ROAD LEGEND  
Improved Road  
Unimproved Road  
Trail  
Interstate Route  
U.S. Route  
State Route

GOLDEN THRONE, UTAH  
PROVISIONAL EDITION 1987

38111-B2-TF-024

SEP 18 1987  
RECD NRCOPY